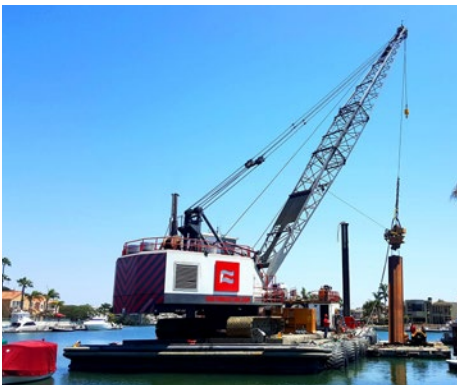


Mega Crane

150 Ton Derrick Crane Lima 2400B : 120' Boom

Official Number : N/A

IMO Number : N/A



Specifications :

VESSEL NAME: Mega Crane

DIMENSIONS: N/A

BUILT: 1980

REBUILT: 2013

MAIN ENGINES: Caterpillar C-18

HORSEPOWER: 800HP @ 1800 RPM

TIER RATING: 3

BOOM LENGTH (STANDARD CONFIGURATION): 120'

GENERATOR: Perkins

MAX CAPACITY: 300,000 lbs

LINE PULL: 70,000 lbs

@ 30' Radius- 202,000 lbs

@ 120' Radius- 33,000 lbs

LIFTING LINES: 2

MAIN DRUM HOIST WIRE: 1-3/8"

AUXILIARY DRUM HOIST WIRE: 1-3/8"

BOOM HOIST DRUM WIRE: 1"

Derrick Crane : Lima 2400B

Specifications :

General

Year- 1980
 Model- 2400B
 Builder- Lima
 Rebuilt- 2013
 Type- Conventional Duty Cycle

Machinery

Main Engine- Caterpillar C-18
 Horsepower- 800HP @ 1800 RPM
 Tier Rating- 3
 Engine Monitoring- Murphy Digital Display
 Torque Converter- Clark Torcon 226AH
 Generator – Perkins
 Generator Capacity- 65 KW
 Generator Output- 480V
 Tier Rating- 3
 Air Compressor- Quincy 325
 Fuel Capacity- 600 Gallons
 Hydraulic Pumps- (2) @ 35 GPM

Controls

Main Controls- Electronic over air
 Hoist- Electronic over air
 Brake- Air
 Swing- Electronic over air

Electronics

VHF- (2) Icom M-604
 Computer- (1) Bice Special
 Camera- (5) CCTV
 Load Moment Indicator- Rayco Wylie
 Climate Control- Fujitsu Air Conditioning

Equipment

Tagline Winch- Hydraulic Constant Tension
 Lighting- (4) LED Boom Lights
 (5) LED Perimeter Lights

Capacities

Maximum Capacity- 300,000 lbs
 Line Pull- 70,000 lbs
 @ 30' Radius- 202,000 lbs
 @ 120' Radius- 33,000 lbs

